



Project	
Nomenclature	
Type	Date
Approval	
Notes	

The BLSPM is an LED mini linear strip fixture designed for surface and suspended mounting. It is well suited for indoor use where high efficiency, row-mountable task lighting is required. Its mini strip design and modern profile make it an ideal fixture for task lighting applications.

Luminaire Summary

Features

- Operating temperature ranges available from -40C to 40C
- L70 of 99,000+ hours, L90 of 30,000+ hours
- Standard 0 - 10V dimming
- Available in 2700K, 3000K, 3500K, 4000K, 5000K and 6500K
- Lumen packages are available ranging from 2' 1.75L (1759lm) to 8' 19.0L (18943lm)

Approvals

- ETL certified to UL Canada and United States standards
- Made with UL Listed components
- Dry and Damp Environment Rated
- DLC Listed

Mounting

- Holes provided for V-hangers, S-hook chain-mounting, or aircraft cables
- Optional pendant-mount and row-mount brackets
- Knockouts provided for row-mounting

Construction

- Manufactured in Ontario, Canada
- Powder-coated in high reflectance gloss white (other colours available)
- Precision bent for added strength and rigidity
- Welded end caps

Electrical

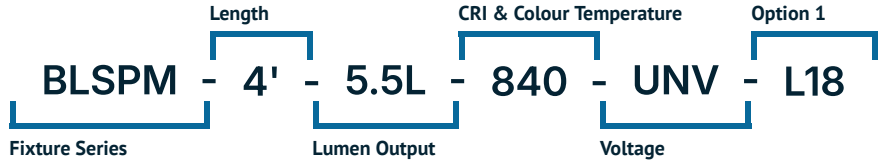
- Available in 120-277V, 120-347V, 347V and 480V

Options

- Custom lengths available
- Wireless Controls Available
- 90 and 95+ CRI Options Available
- 120-347V(UN3) Available

Ordering Information

Fill in the fields below with your product selections. If you need help with this section, contact your local sales professional.



1	2	3	4	5
BLSPM				

Series	Lumen Output		CRI	Colour Temp	Voltage	
BLSPM	2' 1.75L	(1759lm)	4' 9.5L (9485lm)	8 - 80 CRI	27 - 2700K	UNV -
	2' 2.25L	(2261lm)	8' 5.0L (5053lm)	9 - 90 CRI	30 - 3000K	120-277V
	2' 2.75L	(2764lm)	8' 7.0L (7122lm)	1 - 95+ CRI	35 - 3500K	UN3 -
	4' 2.5L	(2530lm)	8' 9.0L (9163lm)		40 - 4000K	120-347V
	4' 3.5L	(3566lm)	8' 11.0L (11176lm)		50 - 5000K	347 - 347V
	4' 4.5L	(4588lm)	8' 13.0L (13160lm)		65 - 6500K	480 - 480V
	4' 5.5L	(5596lm)	8' 15.0L (15117lm)			
	4' 6.5L	(6589lm)	8' 17.0L (17046lm)			
	4' 7.5L	(7569lm)	8' 19.0L (18943lm)			
	4' 8.5L	(8535lm)	**L - Custom lumen package			

Options

Lenses

L18 Frosted Lens

Cords

- W3xx White 16/3 (Specify Length)
- W4xx Black 16/3 (Specify Length)
- W59xx White 16/5 (Specify Length)
- W*** Other Options Available*

Key	Cord Length	Key	Cord Length
6	6FT	15	15FT
10	10FT	20	20FT

Ex. W406 would be 16/3 Black, 6FT

Motion Sensors

- W26 Photocell Motion Sensor
- W57 Dimming Motion Sensor (dims to 50% when unoccupied)
- W53* On/Off
- W8* High/Low
- WX16 Microwave Dimmable Sensor
- W** Other Options Available*

Finish

- BLANK Standard Gloss White
- C5 Matte Black
- CUSTOM* Custom Colour Choice

Dimming

- B11 0-10V Dimming Leads
- B12 Line Voltage Dimming
- B27 Dim-to-off Driver
- B** Other Options Available*

Controls

- WC10* Encelium Wireless Controls
- WC18* NX Wireless Controls
- WC19* Avi-on Wireless Controls
- WC22* JDRF Wireless Controls

Emergency Driver

- B17 UL924 6W Battery Back-up
- B24 UL924 10W Battery Back-up
- B38 UL924 15W Battery Backup
- F8 UL924 Emergency Relay

Packaging

- BLANK Individually Boxed on Pallets
- P0 Bulk Packaging
- P** Other Options Available*

Mounting

- M1 V-Hangers
- M2xx V-Hanger with Aircraft Loop Cables
- M3xx Y-Toggle Aircraft Cables
- M24 Single Pendant Mount(3/4 Hub)
- M** Other Options Available*

Key	Aircraft Length	Key	Aircraft Length
5	5FT	15	15FT
10	10FT	20	20FT

Ex. M305 would be Y-Toggle, 5FT

Modular Wiring

- W27XYZC Modular Power Cable
- W22XY Molex Row Mounting Wiring

See page 7

Warranty

- CL7 10-Year Comprehensive Warranty Upgrade

Documentation and Resources

All files and resources are available on our website for download. Files and resources are also embedded as links in this document, listed below. Additional files may be available upon request. Please contact your local sales agent [here](#) or contact sales@bjtake.com for more information.

BLSPM-4'-2.5L

BLSPM-4'-3.5L

BLSPM-4'-4.5L

BLSPM-4'-5.5L

BLSPM-4'-6.5L

BLSPM-4'-7.5L

BLSPM-4'-8.5L

BLSPM-4'-9.5L

Certifications and Listings

Certifications that apply to this fixture and its possible configurations are listed here. More information available upon request.

Icon	Description
	Wireless Controls Available
	DLC Listed
	ETL Listed
	90 and 95+ CRI Options Available
	120-347V(UN3) Available

Usage Applications

This fixture can be used in a variety of applications, and is ideal for the following:

Usage Application
Manufacturing Facilities
Storage
Offices
Schools
Retail Stores
Distribution Facilities
Processing Plants
Aisle Lighting

Warranty Statement

BJ Take products are tested and/or inspected prior to being packaged for shipment and are guaranteed from the day the product is shipped for a period of ten-year LED chip warranty and a five-year comprehensive component warranty. This can be upgraded to a ten-year comprehensive warranty on request.

Important Information

Below you will find the available wattage charts for the BLSPM. For any required specifications that are not listed here, please contact our sales team at sales@bjtake.com to request any additional information.

BLSPM, 2 Foot, Wattage

Size	Lumen Output	Actual Lumen Output	Fixture Wattage	Lumens per Watt
2'	1.75L	1759	12.70	138.50
2'	2.25L	2261	16.40	137.90
2'	2.75L	2764	20.00	138.20

BLSPM, 4 Foot, Wattage

Size	Lumen Output	Actual Lumen Output	Fixture Wattage	Lumens per Watt
4'	2.5L	2530	17.90	141.30
4'	3.5L	3566	25.40	140.40
4'	4.5L	4588	32.90	139.50
4'	5.5L	5596	40.40	138.50
4'	6.5L	6589	47.90	137.60
4'	7.5L	7569	55.30	136.90
4'	8.5L	8535	62.80	135.90
4'	9.5L	9485	70.30	134.90

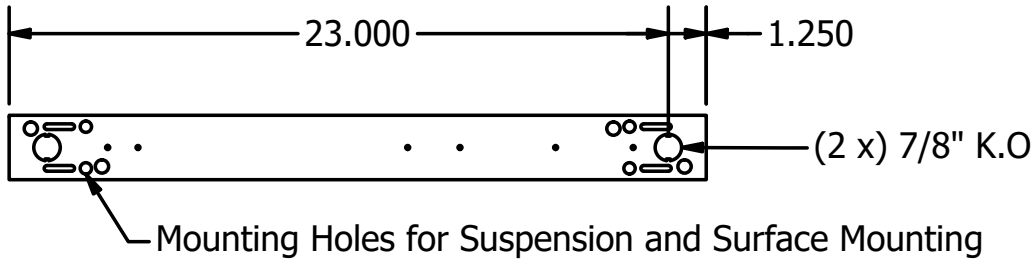
BLSPM, 8 Foot, Wattage

Size	Lumen Output	Actual Lumen Output	Fixture Wattage	Lumens per Watt
8'	5.0L	5053	35.70	141.50
8'	7.0L	7122	50.70	140.50
8'	9.0L	9163	65.60	139.70
8'	11.0L	11176	80.10	139.50
8'	13.0L	13160	95.60	137.70
8'	15.0L	15117	110.50	136.80
8'	17.0L	17046	125.50	135.80
8'	19.0L	18943	140.40	134.90

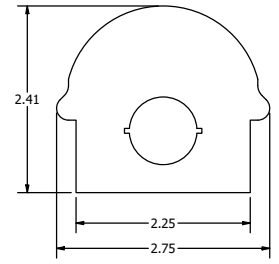
BLSPM, LLF (Light Loss Factor)

CCT	Output%
2700K	92.95
3000K	95.51
3500K	96.80
4000K	100.00
5000K	101.28
90CRI	84.72

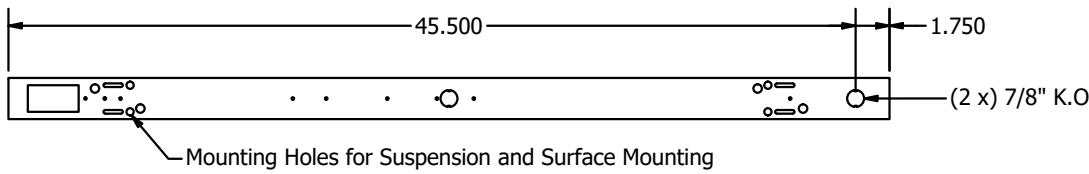
BLSPM, 2 Foot, Side Dims



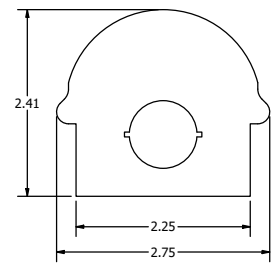
2FT End View



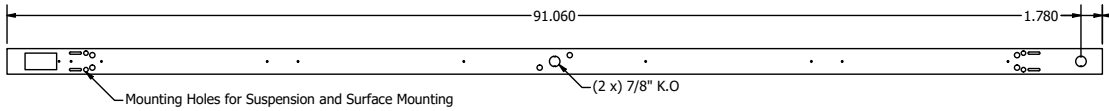
BLSPM, 4 Foot, Side Dims



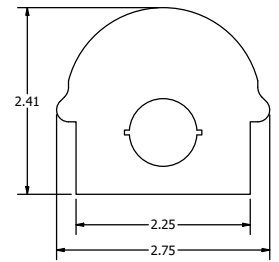
4FT End View



BLSPM, 8 Foot, Side Dims



8FT End View

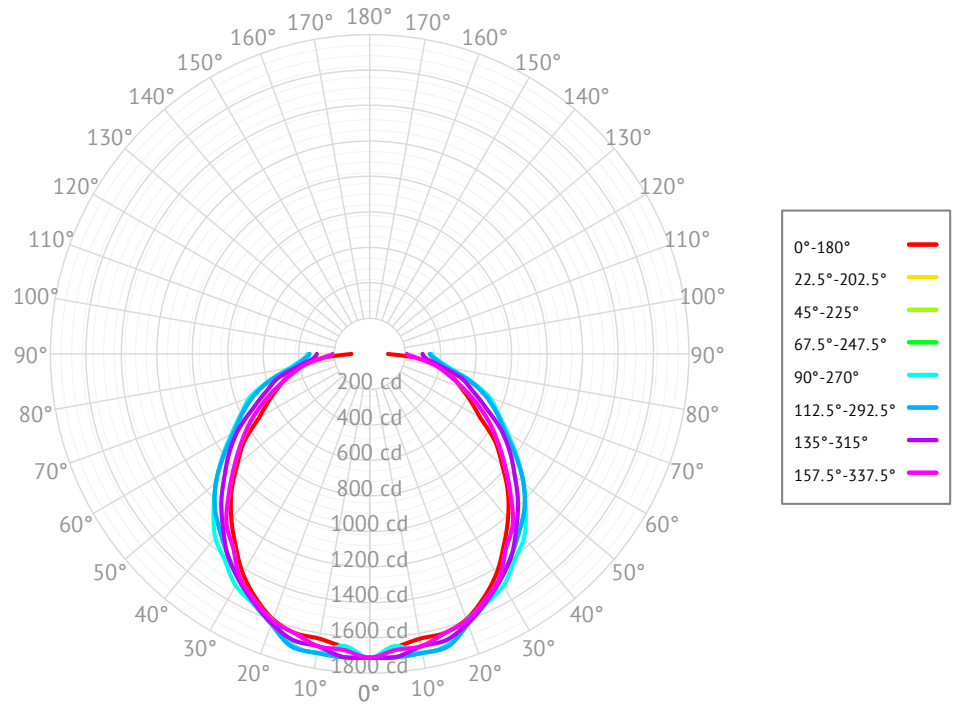


- * Drawings aren't to scale
- * Standard tolerances apply
- * Specifications may change without notice

BLSPM-4'-5.5L-840-L18

Cone of Light

Mtg Height	Light Level	Beam Diameter
6.0 ft	47.6 fc	17.3 ft
8.0 ft	26.8 fc	23.0 ft
10.0 ft	17.1 fc	28.8 ft
12.0 ft	11.9 fc	34.6 ft
14.0 ft	8.7 fc	40.3 ft
16.0 ft	6.7 fc	46.1 ft

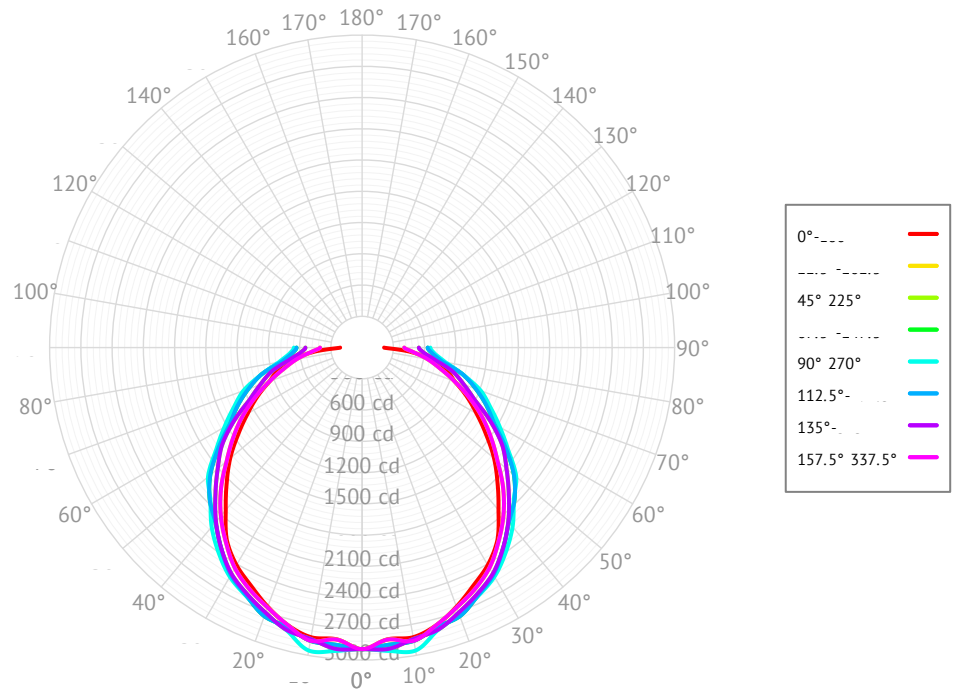


Based on 'BLSPM-4'-5.5L-840-L18', ie. (BLSPM, 4 foot, 5500lm, 80 CRI, 4000K, w/ L18 Frosted Acrylic Lens)

BLSPM-4'-9.5L-840-L18

Cone of Light

Mtg Height	Light Level	Beam Diameter
6.0 ft	80.4 fc	16.8 ft
8.0 ft	45.2 fc	22.3 ft
10.0 ft	29.0 fc	27.9 ft
12.0 ft	20.1 fc	33.5 ft
14.0 ft	14.8 fc	39.1 ft
16.0 ft	11.3 fc	44.7 ft

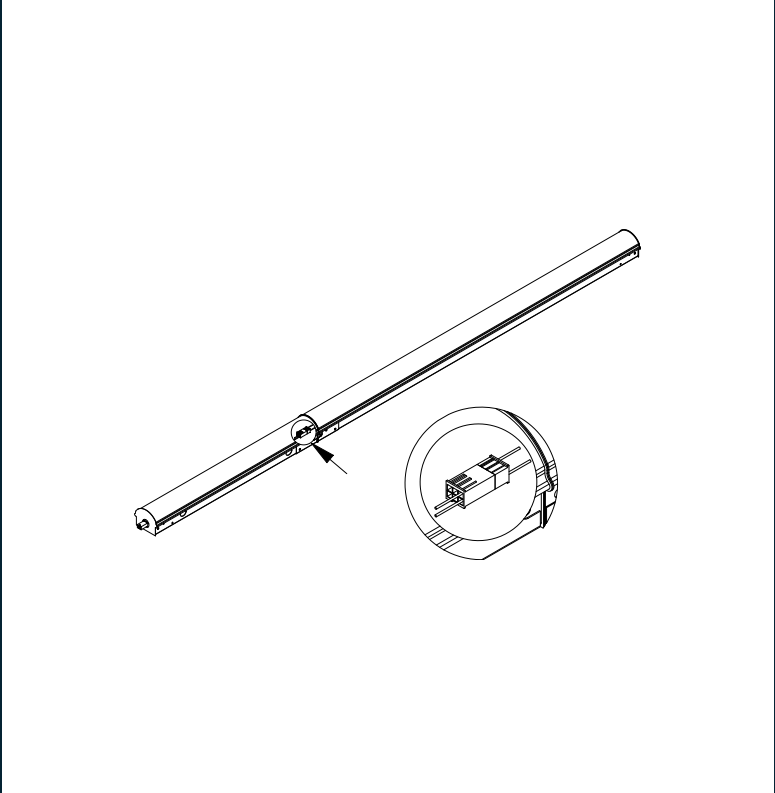


Based on 'BLSPM-4'-9.5L-840-L18', ie. (BLSPM, 4 foot, 9500lm, 80 CRI, 4000K, w/ L18 Frosted Acrylic Lens)

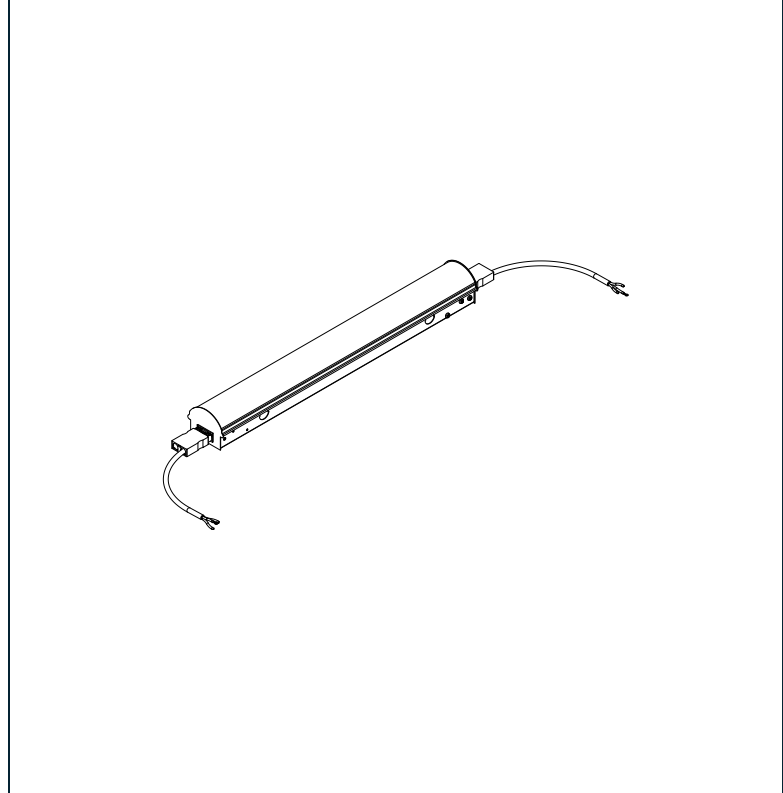
Modular Wiring

The BLSPM has options for modular wiring. Below you will find the diagrams for these wiring options, and the relevant option codes necessary for ordering them.

W22XY - Molex Row Mounting Wiring



W27XYZC - Modular Power Cable



W22XY - Molex Row Mounting Wiring

X - Style	Y - Poles
E - End	3 - 3 Pole
.	4 - 4 Pole
.	5 - 5 Pole
.	6 - 6 Pole

Example: **W22E6** (see image above)

W27XYZC - Modular Power Cable

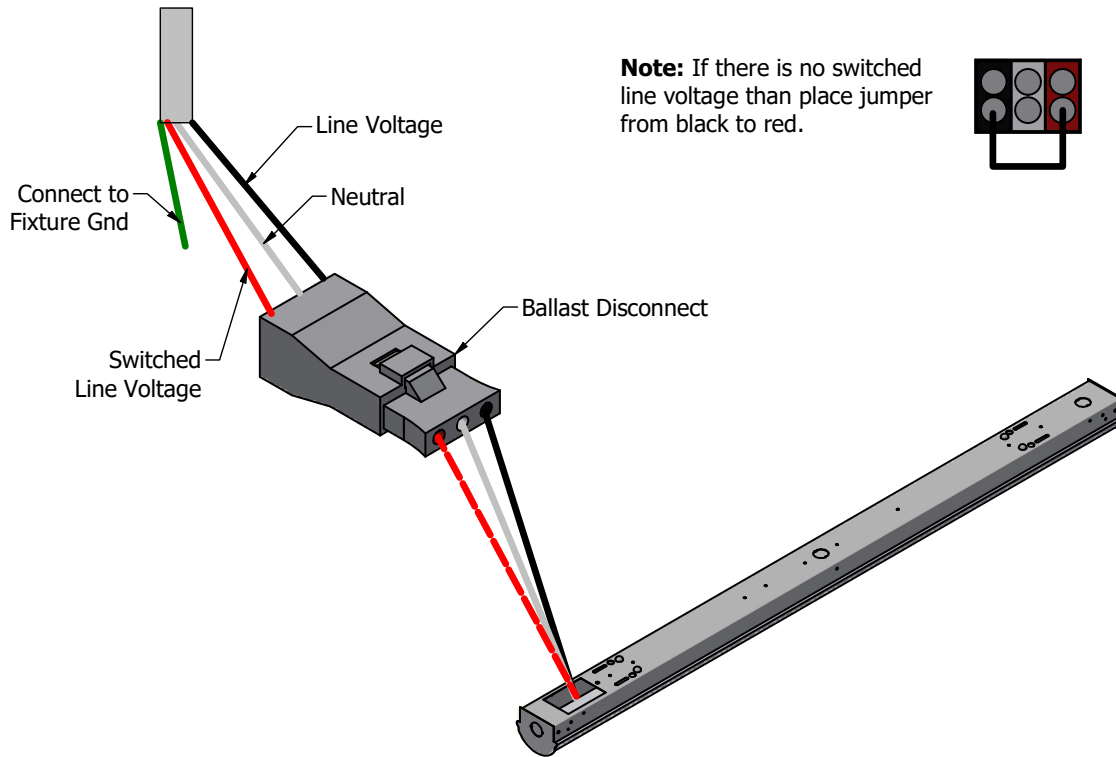
X - Style	Y - Poles	Z - Wiring	C - Colour
S - Side	3 - 3 Pole	Blank - Standard	Blank - White
E - End	4 - 4 Pole	E - End of Row	B - Black
T - Top	5 - 5 Pole	.	G - Grey
.	6 - 6 Pole	.	.

Example: **W27E3** (see image above)

Emergency Battery Plan - 10W

Emergency Lighting	Solution System Components	System Operation
Option Code 'B17' - UL 924 listed components that are factory installed in the luminaire	UL 924 listed 10-watt battery integral to the luminaire	Loss of normal power is detected by the B17 emergency light solution and the power supply is switched automatically to the 10-watt integral battery pack which powers the emergency LED lighting driver.
	UL 924 listed LED emergency lighting driver integral to the luminaire	The battery pack and emergency LED driver are UL 924 certified to provide a minimum of 90-minutes of emergency lighting.
	Wiring options for both switched and unswitched emergency lighting	

Emergency Lighting Wiring



Important Information

More information on emergency lighting options and configurations available on request.